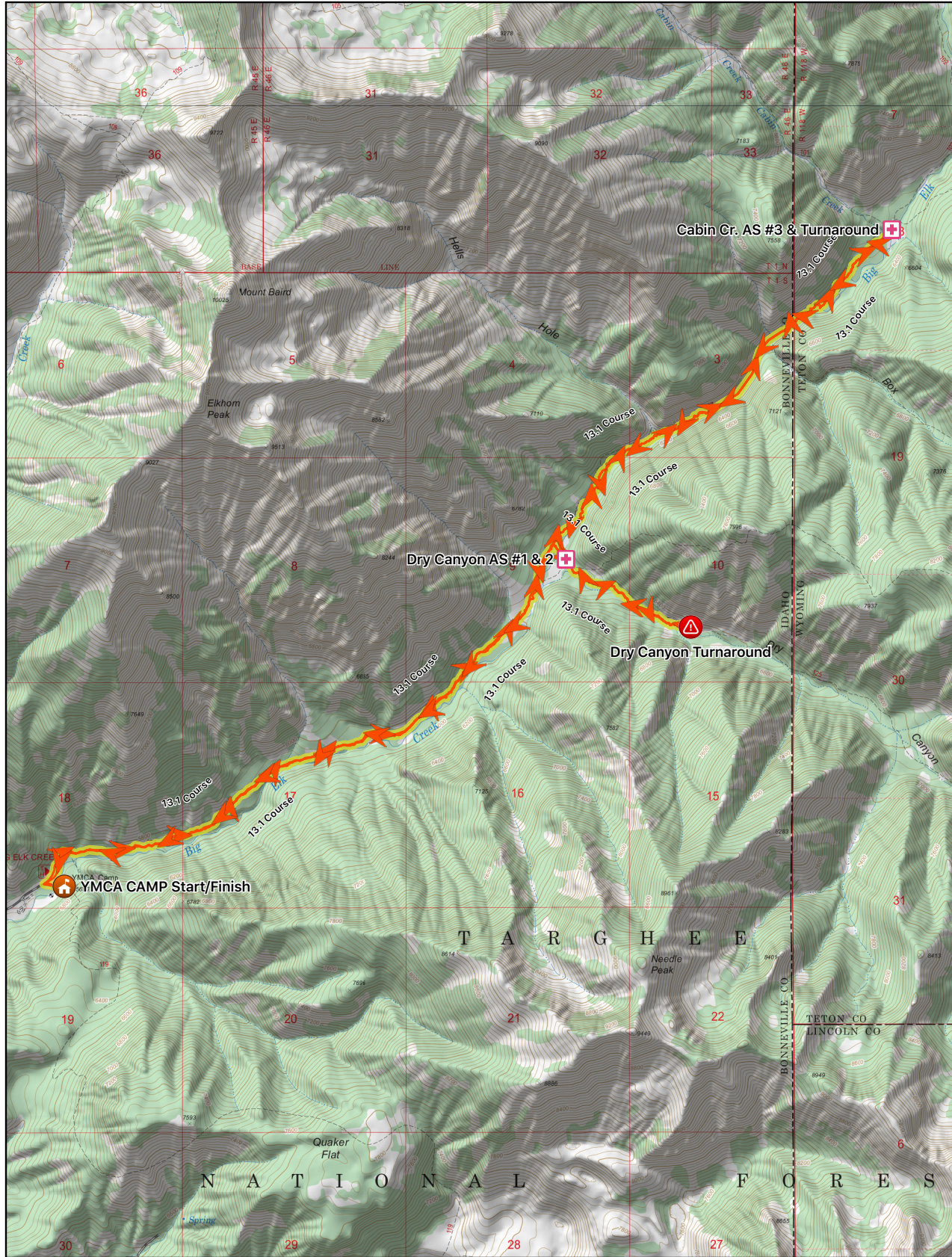
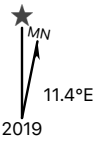




Topo Maps+

0.75 1.5 mi
Scale 1:40,533 1 inch = 3377 feet



Distances from Trailhead

- Trailhead 0FT
- YMCA CAMP Start/Finish 60FT

Dry Canyon AS #1 & 2 3.37MI
#1 After mile 3+ you will make a right turn onto the Dry Canyon trail. Within a few 100 ft. will be the Dry Canyon Aid Station. Then you will cross Big Elk Creek and do a .90 Mile out and .90 Mile back.

#2 You will hit the aid station again and then turn right and head north up the Big Elk trail again, until you hit Cabin Cr.

- Dry Canyon Turnaround 4.16MI**

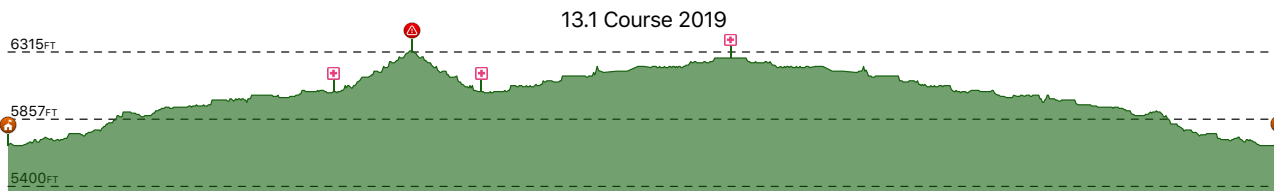
Dry Canyon AS #1 & 2 4.88MI
#1 After mile 3+ you will make a right turn onto the Dry Canyon trail. Within a few 100 ft. will be the Dry Canyon Aid Station. Then you will cross Big Elk Creek and do a .90 Mile out and .90 Mile back.

#2 You will hit the aid station again and then turn right and head north up the Big Elk trail again, until you hit Cabin Cr.

Cabin Cr. AS #3 & Turnaround 7.45MI
After Cabin Cr., if you feel you absolutely need aid you can add the small extra distance to turn off the trail to hit the Dry Canyon AS again.

- YMCA CAMP Start/Finish 13.09MI**

- Trailend 13.10MI



Jul 7, 2019 at 10:03 PM